

# Edificio jardín hospedero y nectarífero para mariposas de Cali

Oficina: HUSOS / Camilo García y Diego Barajas + Francisco Amaro (Biólogo) + Comunidad de habitantes del edificio  
Cali, Colombia. Etapa 1: 2005 / Etapa 2: 2010

Fotografía: Manuel Salinas, Javier García y Pedro Ruiz

Main facade / Fachada principal. Photo / Foto: Pedro Ruiz



0 1 2 3 4 5 6 7 8 9 10

Elevation / Alzado





First floor / Planta primera



Second floor / Planta segunda



Third floor / Planta tercera



Fourth floor / Planta cuarta

Interior towards the patio / Interior hacia patio. Photo / Foto: Manuel Salinas



Interior towards the facade / Interior hacia fachada. Photo / Foto: Manuel Salinas





Facade detail / Detalle de fachada.  
Photo / Foto: Manuel Salinas

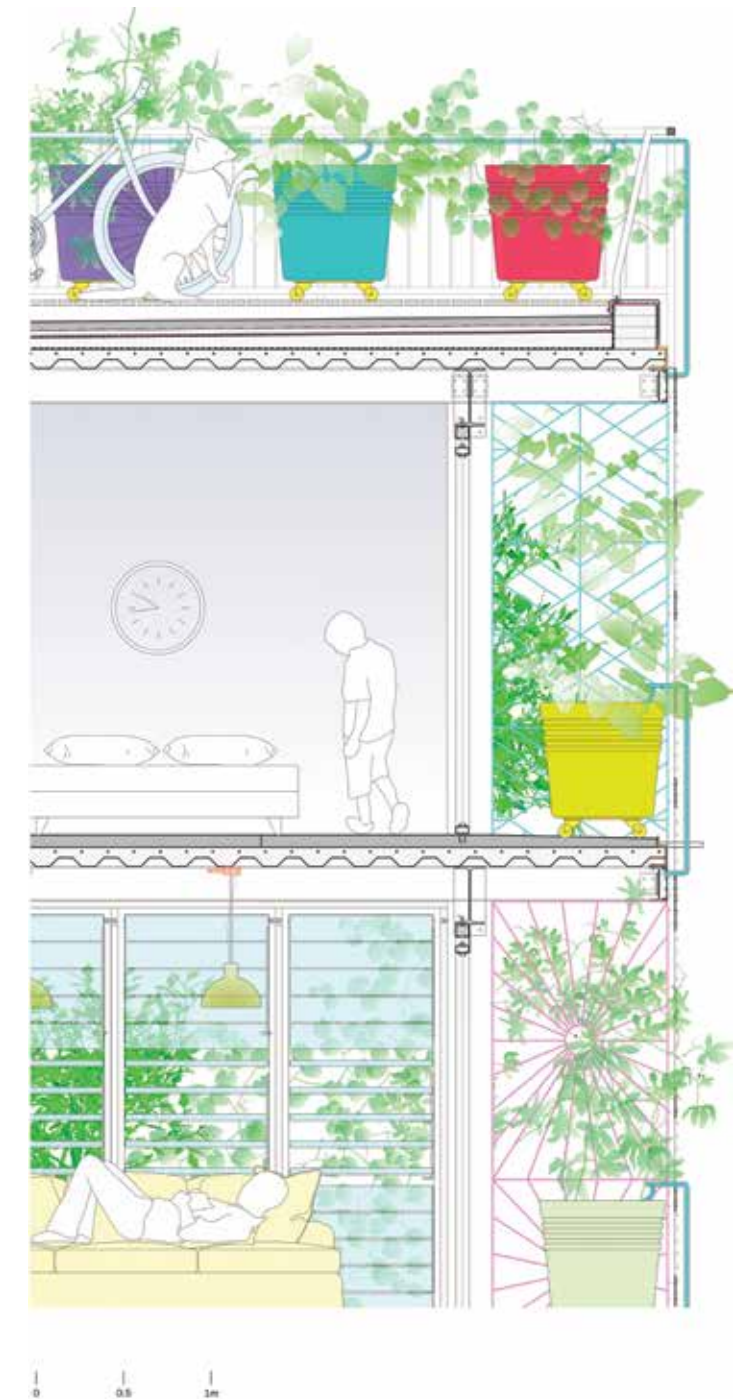
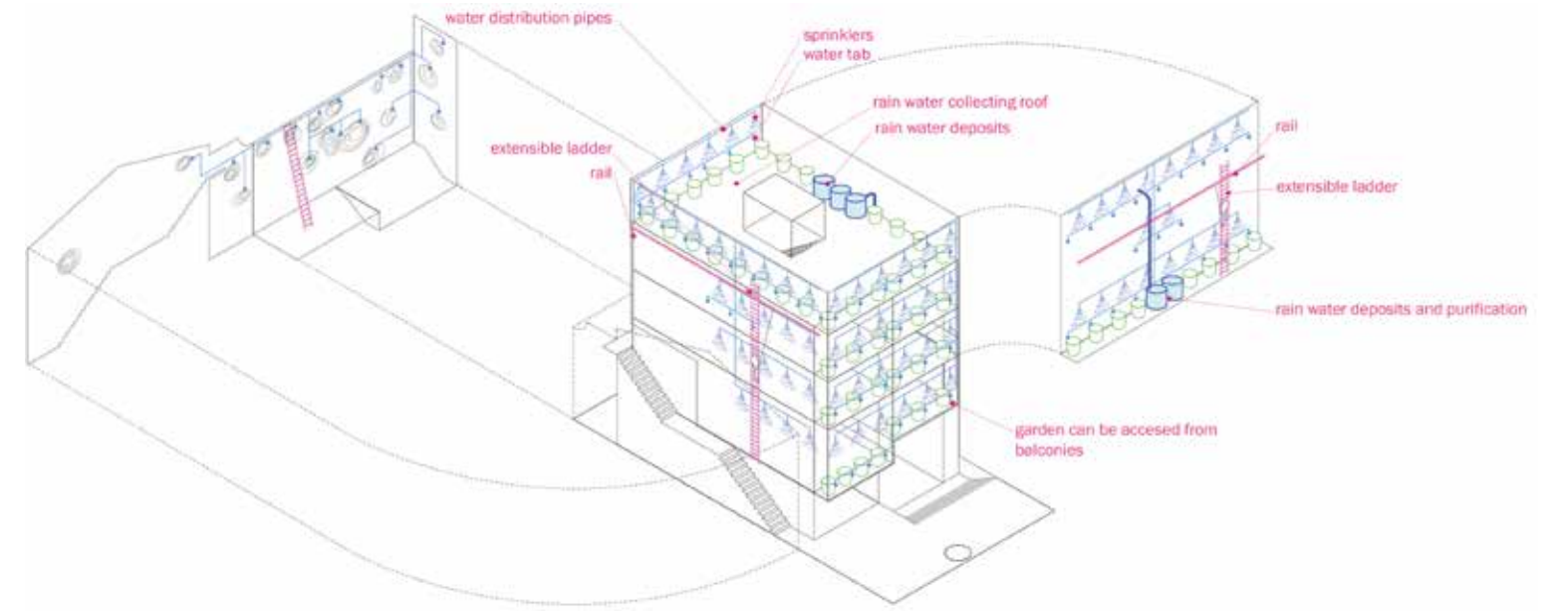




Photo / Foto: Husos



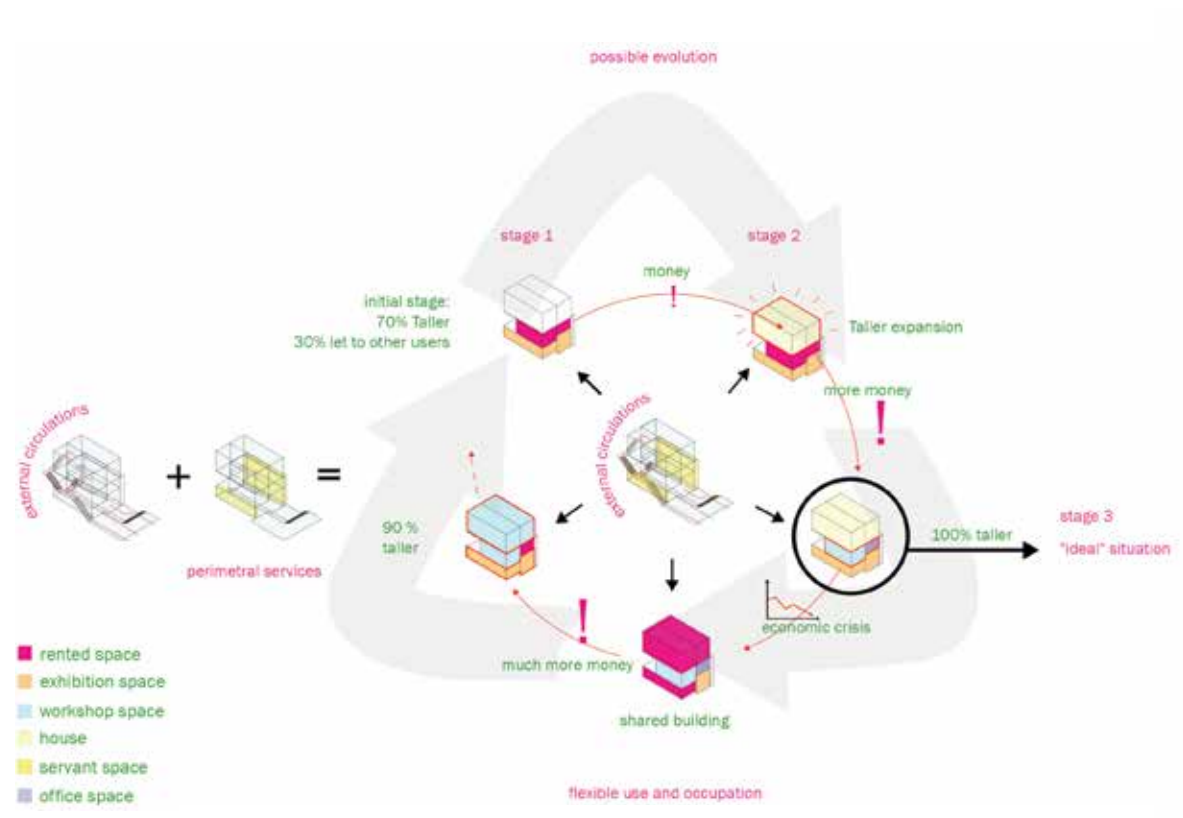
To prune and maintain the vertical garden, plants can be accessed through balconies or using the extensible ladders which hang from rails fixed to the upper beam on the lateral elevations, along which they can slide.

The irrigation system is composed of drip irrigation and sprinklers for the foliage. Rain water is collected on the roof, and stored on water tanks located on the 2nd floor and the terrace.

Irrigation system diagram / Diagrama sistema de riego



Interior facade and longitudinal section / Fachada interior y sección longitudinal



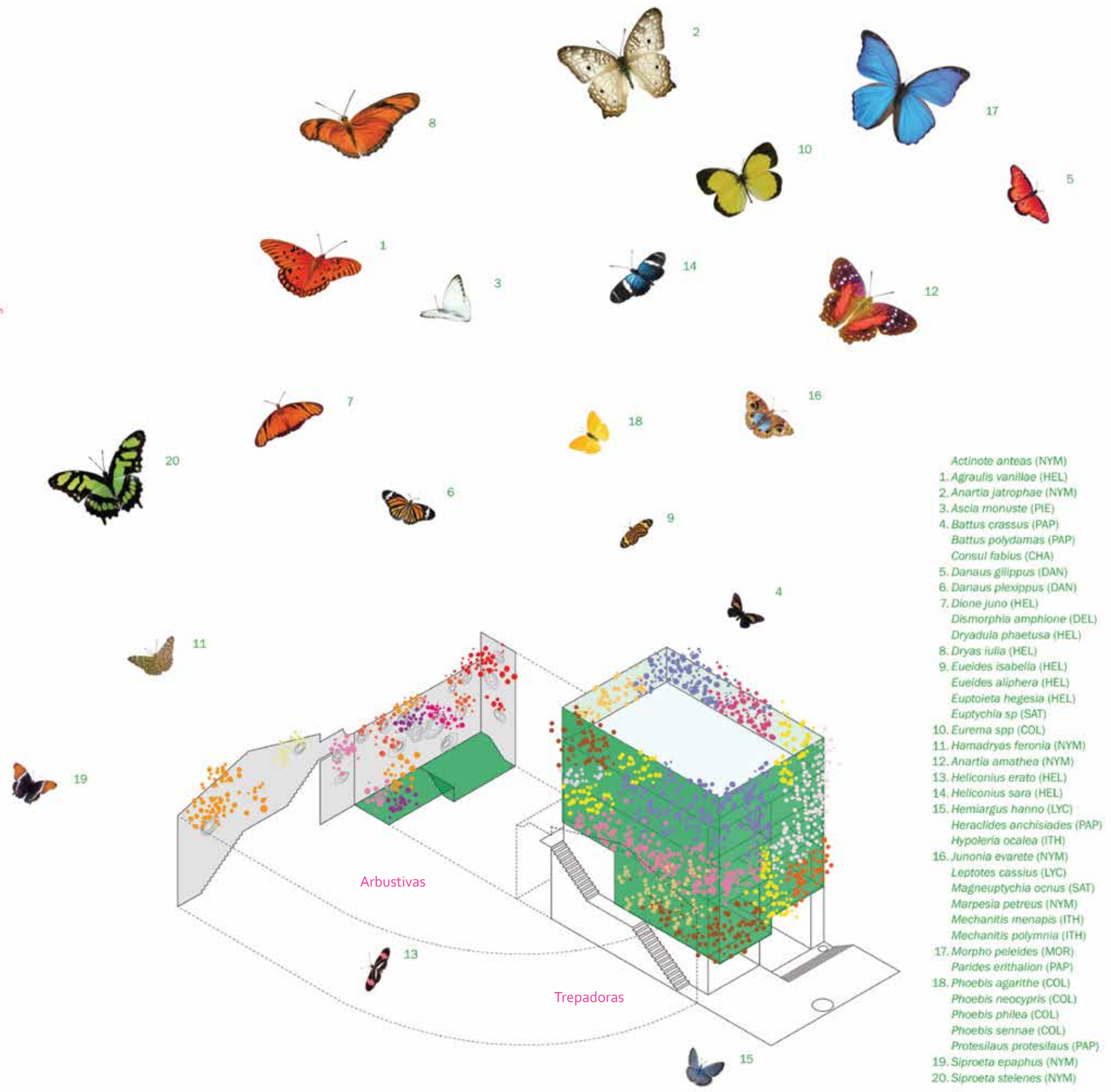
Growth model / Modelo de crecimiento

Arbustivas

Trepadoras



Species and butterflies diagram / Diagrama especies y mariposas



- Actinote antea* (NYM)
- 1. *Agraulis vanillae* (HEL)
- 2. *Anartia jatrophae* (NYM)
- 3. *Ascia monuste* (PIE)
- 4. *Battus crassus* (PAP)
- 5. *Battus polydamas* (PAP)
- 6. *Consul fabius* (CHA)
- 7. *Danaus gilippus* (DAN)
- 8. *Danaus plexippus* (DAN)
- 9. *Dione juno* (HEL)
- 10. *Dismorphia amphione* (DEL)
- 11. *Dryadula phaetusa* (HEL)
- 12. *Dryas iulia* (HEL)
- 13. *Eueides isabella* (HEL)
- 14. *Eueides aliphera* (HEL)
- 15. *Euptoieta hegesia* (HEL)
- 16. *Euptychia sp* (SAT)
- 17. *Eurema spp* (COL)
- 18. *Hamadryas feronia* (NYM)
- 19. *Anartia amathea* (NYM)
- 20. *Heliconius erato* (HEL)
- 1. *Heliconius sara* (HEL)
- 2. *Hemiargus hanna* (LYC)
- 3. *Heraclides anchisiades* (PAP)
- 4. *Hypocleia ocalea* (ITH)
- 5. *Junonia evarete* (NYM)
- 6. *Leptotes cassius* (LYC)
- 7. *Magneuptychia ocnus* (SAT)
- 8. *Marpesia petreus* (NYM)
- 9. *Mechanitis menapis* (ITH)
- 10. *Mechanitis polymnia* (ITH)
- 11. *Morpho peleides* (MOR)
- 12. *Parides erithalion* (PAP)
- 13. *Phoebis agarithe* (COL)
- 14. *Phoebis neocypris* (COL)
- 15. *Phoebis philea* (COL)
- 16. *Phoebis sennae* (COL)
- 17. *Protesilaus protesilaus* (PAP)
- 18. *Siproeta epaphus* (NYM)
- 19. *Siproeta steelenes* (NYM)